



USN

--	--	--	--	--	--	--	--	--	--

10CV73

## Seventh Semester B.E. Degree Examination, June/July 2017

### Estimation and Valuation

Time: 3 hrs.

Max. Marks:100

- Note: 1. Answer full question from PART-A.  
2. Answer FOUR full questions, selecting at least TWO questions from PART-B and PART-C.**

#### PART - A

- 1 Prepare a detailed estimate for residential building shown in Fig.Q1 (i) and (ii) for following items of work. Prepare an abstract also. Adopt center line method.
- Earth work in excavation for foundation in hard soil at Rs.125/m<sup>3</sup>
  - C.C bed 1:4:8 for walls at Rs.2500/m<sup>3</sup> and basement at Rs.2500/m<sup>3</sup>
  - First class brick work in C.M. 1:4 in foundation and basement at Rs.4000/m<sup>3</sup>
  - D.P.C. 2.5 cm thick with standard water proofing compound at Rs.4100/m<sup>2</sup>
  - First class brick work in C.M in 1 : 6 in superstructure including parapet Rs.4000/m<sup>3</sup>.
- (40 Marks)

#### PART - B

- 2 Prepare a detailed estimate of a septic tank with a soak pit shown in Fig.Q2 for following items of work. (15 Marks)
- Earth work in excavation
  - C.C. bed 1:3:6
  - First class brickwork in C.M. 1:4
  - 12 mm thick cement plastering of walls
- 3 Write detailed specification of any three of following: (15 Marks)
- Reinforced cement concrete (R.C.C)
  - Damp proof course 2.5 cm cc 1:1½:3
  - First class brickwork
  - Plastering in C.M.
- 4 a. What is an estimate? What are the different data required to prepare an estimate? Explain. (07 Marks)
- b. Enumerate various types of estimate. Explain any one in brief. (08 Marks)

#### PART - C

- 5 Carry out rate analysis for any three of following: (15 Marks)
- Cement concrete 1:2:4 in foundation
  - Coursed rubble stone masonry in superstructure in 1:6 cement mortar
  - 12 mm thick plastering in C.M. 1:6
  - 2.5 cm thick cement concrete 1:1½:3. Damp proof course (DPC).

- 6 Prepare a detailed estimate for earth work for portion of a road from following data:

Chainage in metres	0	100	200	300	400	500
R.L. of ground	114.50	114.75	115.25	115.20	116.10	116.85
R.L. of formation in m	←115 upward gradient upto 600 as 1 in 200					

600	700	800	900	1000	1100	1200
118.00	118.25	118.10	117.80	117.75	117.90	119.50
←Downward gradient 1 in 400 →						

Formation width of road is 10 m. side slope 2:1 in banking and 1½:1 in cutting. The cost of filling is Rs.220/m<sup>3</sup> and cutting is Rs.150/m<sup>3</sup>. (15 Marks)





- 7 a. Explain any two of following:
- i) Normal Muster Roll (NMR)
  - ii) Measurement Book (MB)
  - iii) Earnest Money Deposit (EMD)
- b. What is valuation? What are the various purposes of valuation? (05 Marks)
- c. Explain sinking fund method of valuation. (05 Marks)

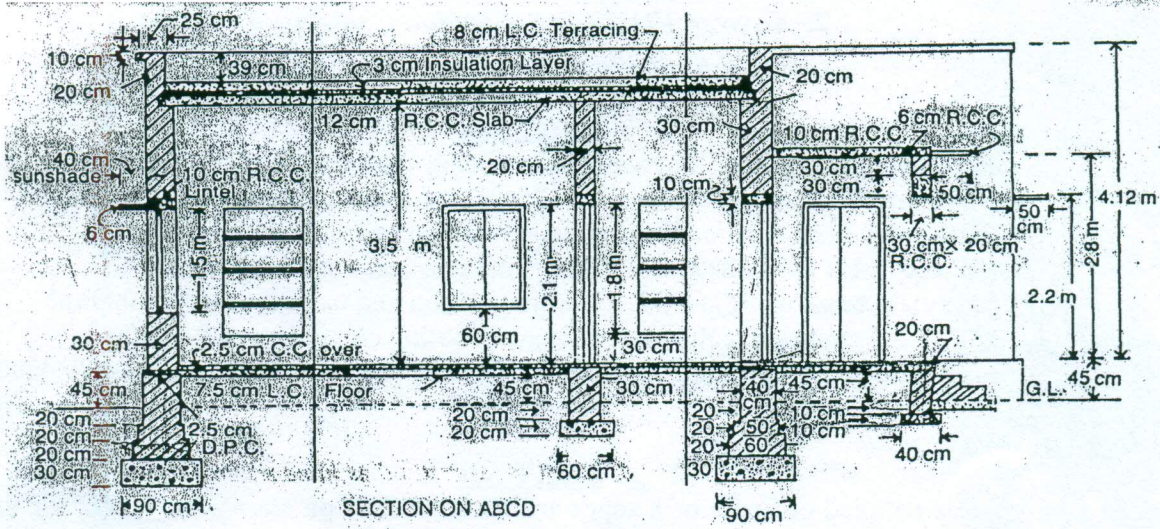


Fig.Q1(i)

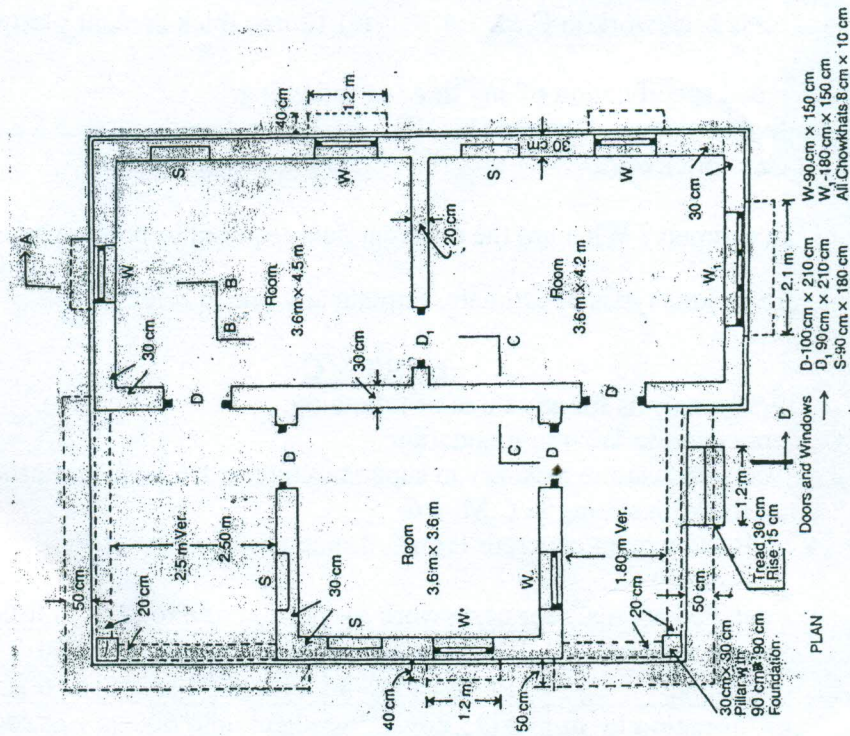


Fig.Q1(ii)