

| | | | | | | | | | |
|--|--|--|--|--|--|--|--|--|--|
| | | | | | | | | | |
|--|--|--|--|--|--|--|--|--|--|



Seventh Semester B.E. Degree Examination, June/July 2016
Estimation and Valuation

Time: 3 hrs.

Max. Marks: 100

Note: **Note: 1. Answer Q.No. 1 which is compulsory, Answer any FOUR questions by selecting any TWO from part B and TWO from part C each.**
2. Missing data, if any, may be suitably assumed.

PART - A

1 The Fig. Q1(a) shows the detail of a residential building with a ceiling height of 3.5m. **Workout the quantities for following items.**

- Earthwork in excavation for foundation in ordinary soil @ Rs 211/cum
- Plinth concrete of DDC 1:2:4 at the rate of Rs 4200/cum
- 1st class brick work in CM 1:6 for superstructure at rate of Rs 3500/cum
- Ceiling plastering at rate of Rs 189/sqm

$D_1 = 0.9 \times 2.1m, D_2 = 1.2 \times 2.1m$
 $W_1 = 1.5 \times 1.35m, W_2 = 1.2 \times 1.35m, W_3 = 1.2 \times 1.35m$
 $V = 0.9 \times 1.2.$

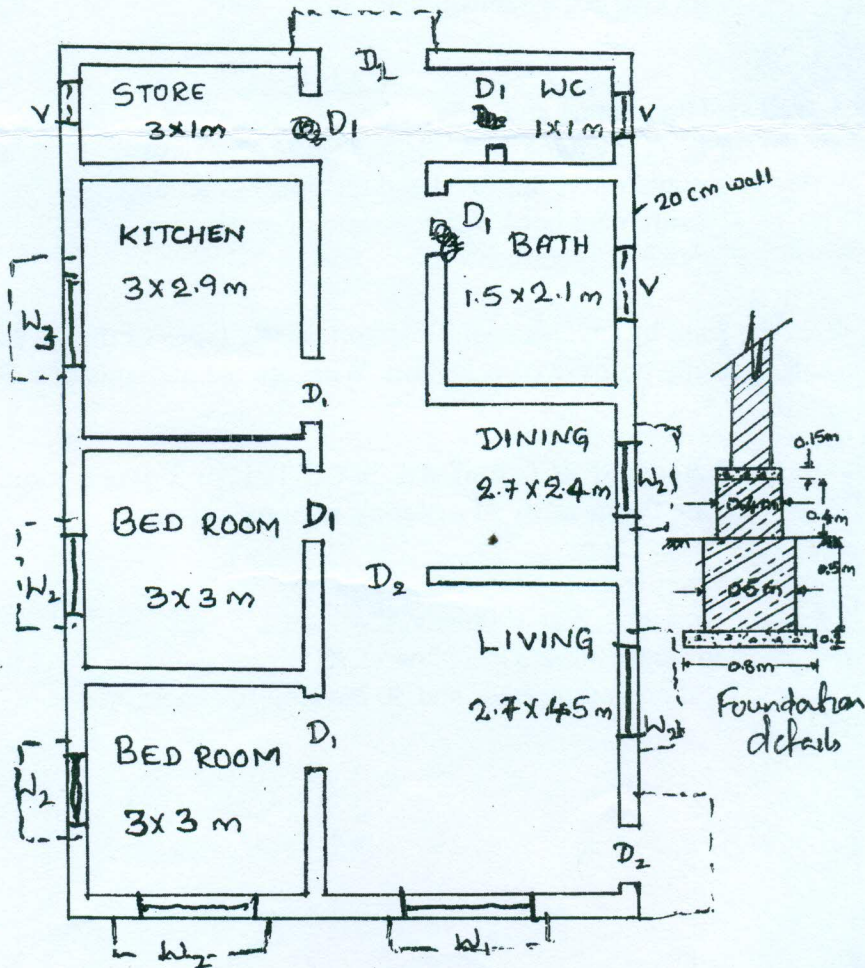


Fig. Q1(a)

Assume lintel over door and windows ventilators.

(40 Marks)

Important Note : 1. On completing your answers, carefully draw diagonal cross lines on the remaining blank spaces.
 2. Any revealing of identification, appeal to evaluator and/or equations written eg. 42+8 = 50, will be treated as malpractice.

Highly confidential

**PART – B**

- 2 Write detailed specification for any three of the following:
- B.B masonry in cm 1:6 for superstructure
 - RCC roof slab with CC1:1½ : 3
 - Size stone masonry in CM 1:6 for basement
 - Ceiling plastering in CM 1:4
- (15 Marks)
- 3 Workout from the first principles the rate analysis for any three of the following :
- Size stone masonry for foundation in CM 1:8
 - BED concrete CC 1:4:8 for foundation
 - Burnt brick masonry for superstructure in CM 1:6
 - 12mm thick plastering for superstructure.
- (15 Marks)
- 4 a. What is an estimate? Briefly explain different types of estimate. (07 Marks)
- b. Briefly explain (any two)
- Security deposit and EMD
 - Tender and quotation
 - Work charged establishment.
- (08 Marks)

PART – C

- 5 a. Briefly explain contract and different types of contract. (07 Marks)
- b. Briefly explain (any two)
- Administrative approval and technical sanction
 - Measurement book and schedule of rates
 - Purpose of specification.
- (08 Marks)
- 6 a. What is meant by specification? Explain briefly types of the specification. (07 Marks)
- b. Explain briefly purpose of valuation. What are the methods of valuation? Explain briefly. (08 Marks)
- 7 Estimate the cost of RCC roof slab in CC 1: 1½ : 3 over a room of internal size 3m × 4m. Also calculate the quantity of materials required, given
Slab thickness : 15cm
Steel reinforcement :
Main steel : 10mm φ at 150mm C/C
Distribution steel : 8mm φ at 200mm C/C
Assume local prevailing rates and 30 cm wall thickness. (15 Marks)
