

--	--	--	--	--	--	--	--	--	--



**Seventh Semester B.E. Degree Examination, June/July 2015**  
**Estimation and Valuation**

Time: 3 hrs.

Max. Marks:100

**Note: Answer Q.No.1 and any FOUR by selecting TWO from Part-B and TWO from Part-C.**

**PART – A**

- 1 The details of a residential building as shown Fig.Q.1. Work out the quantities and cost of the following items of work.
- Earth work in excavation for foundation at Rs.125/m<sup>3</sup>.
  - Plain cement concrete bed 1:4:8 at Rs.3900/m<sup>3</sup>.
  - Size stone masonry in CM 1:6 for foundation and basement at Rs.2900/m<sup>3</sup>.
  - First class brick work in super structure in CM 1:5 at Rs.4000/m<sup>3</sup>.
  - RCC roof slab with cement concrete M20 at RS.5800/m<sup>3</sup>. (40 Marks)

**PART – B**

- What is an estimate? Explain the necessity of estimate. (07 Marks)
  - Explain different types of estimate of buildings. (08 Marks)
- The details of an RCC slab culvert is as shown in Fig.Q.3 Work out the quantities and cost of the following item of works:
  - Earth work for the foundation.
  - First class brick work for the super structure with CM 1:4.
  - RCC work with C.C 1:2:4. (15 Marks)
- Write the detail specifications of the following item of works (any three):
  - Size stone masonry in foundation in CM 1:6.
  - 12mm plastering for walls with CM 1:3.
  - RCC 1:2:4 for roof slab, beams.
  - Painting on wood works. (15 Marks)

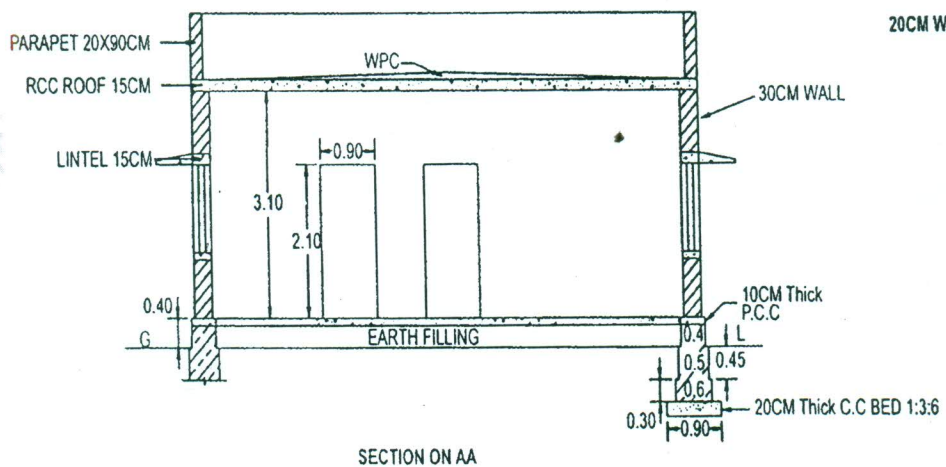
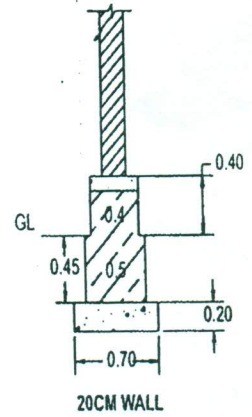
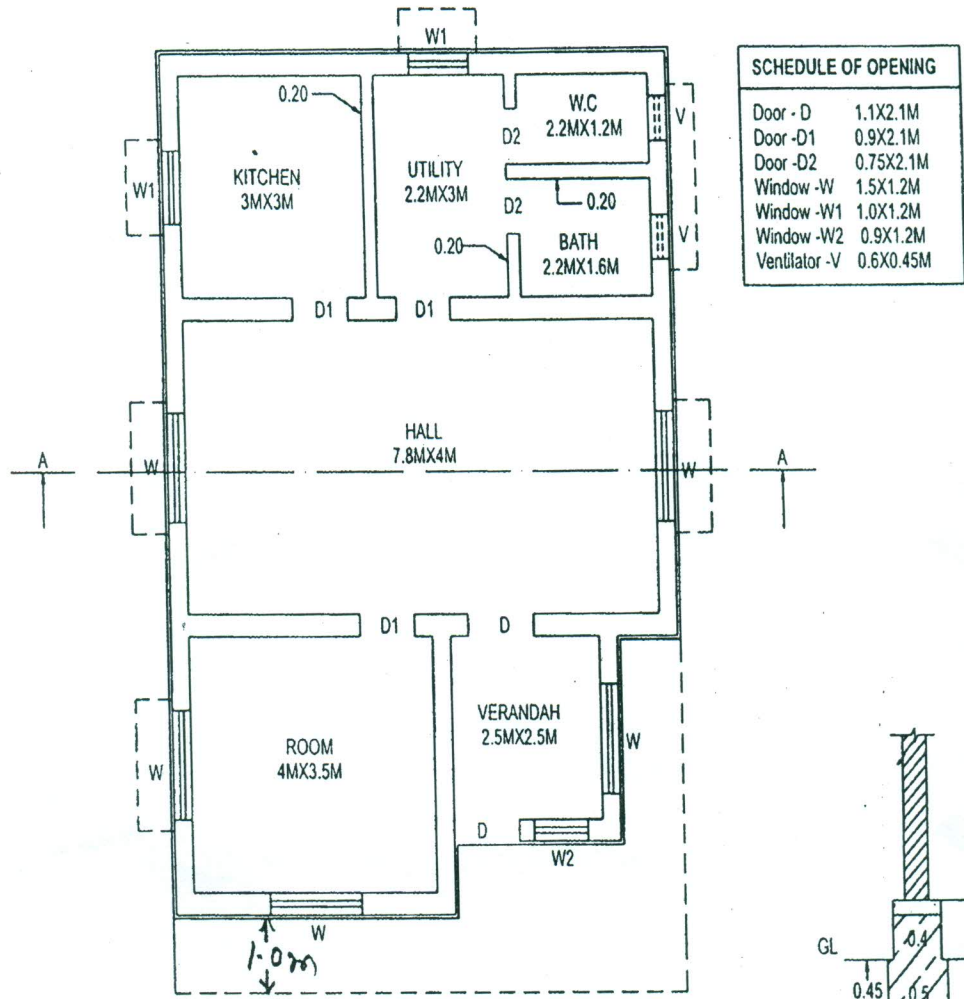
**PART – C**

- Analyze the rate per unit of work from the first principle. Assume local rates:
  - Cement concrete in foundation in P.C.C 1:4:8.
  - Burnt brick masonry in super structure with CM 1:5.
  - 12mm thick plastering in CM 1:3 for walls. (15 Marks)
- Estimate the quantity of earth work for a road of formation width 10m with the following data by mid sectional area method and trapezoidal formula method. Side slope in banking 1:1. (15 Marks)

Chainage (m)	0	40	80	120	160
Ground level (m)	101.20	101.50	101.80	102.00	101.80
Formation level (m)	102.00	← Rising gradient → 1 in 200			

- What is contract? Explain different types of contract. (05 Marks)
  - Define the terms: i) Tender; ii) Earnest money deposit; iii) Security deposit; iv) Nominal muster roll. (05 Marks)
  - Explain the terms sinking fund and depreciation. Explain any one methods of determination of depreciation. (05 Marks)

**RESIDENTIAL BUILDING**



NOTE: All dimensions are in metre

Fig.Q.1



**R.C.C. SLAB CULVERT 1.50 m SPAN with standard modular bricks**

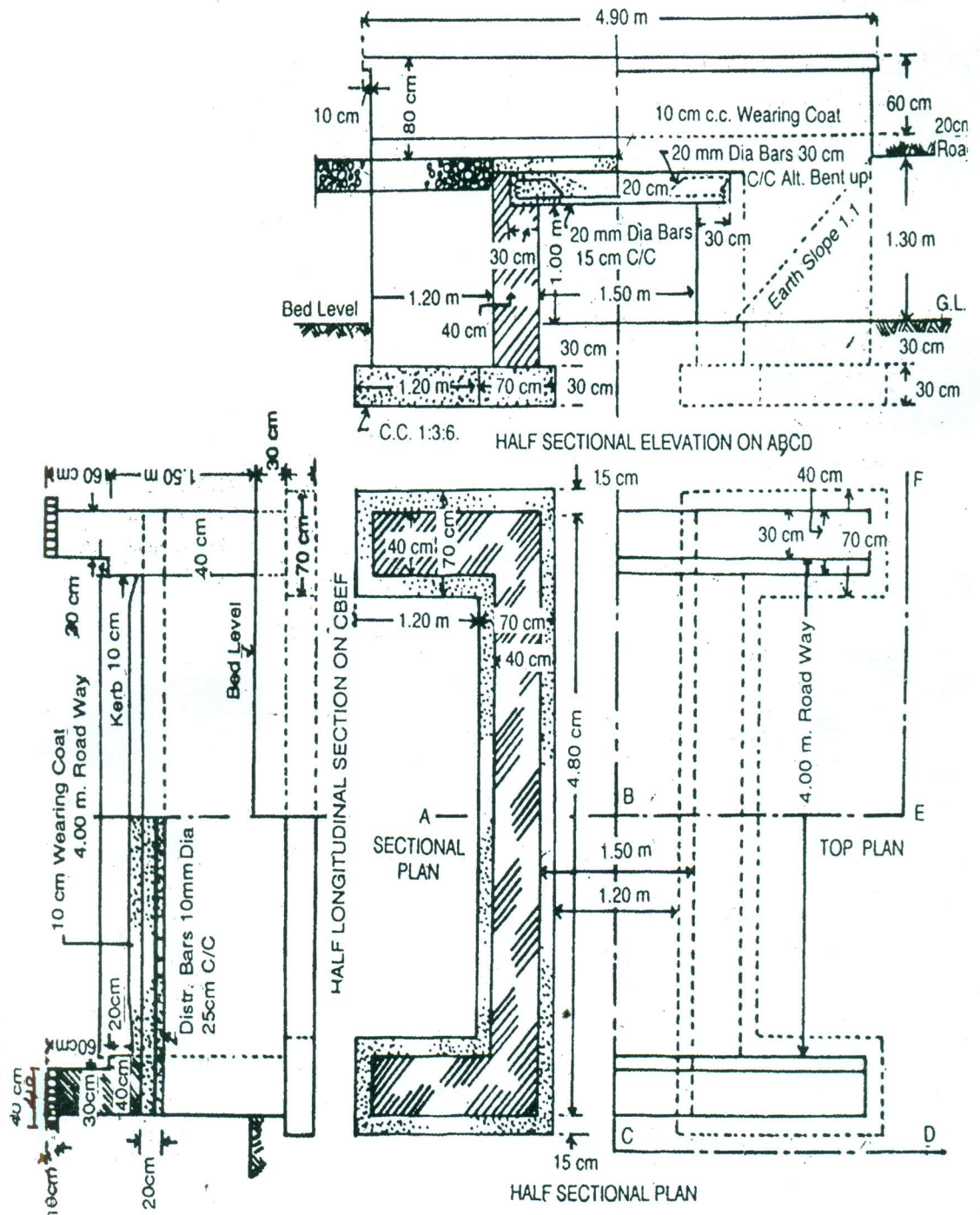


Fig.Q.3

\*\*\*\*\*